

- 8HP Eurorack Module
- Designed in E.U.



Shakmat Archer's Rig Building Guide

Thank You for purchasing a Shakmat DIY Kit!

We spare no effort in our packaging process to prevent any mistakes or missing parts. In this document as well, we tried our best to describe the assembly process in the most practical and comprehensive way. Therefore, we strongly advised you to follow the steps as described in this guide :)

If by any chance there is a missing or damaged part in your kit, feel free to contact us at shakmat.com/support

- Building Guide
- Shakmat Archer's Rig

Content

Pack 1

- 3x 8 pin female headers
- 3x 8 pin male headers
- 1x 2x8 pin power header
- 3x Tactile switches
- 4x Metal potentiometers
- 9x Jack mono

Pack 2

- 6x Amber LED
- 1x Amber LED push button
- 2x White LED push button
- 1x Green LED push button
- 9x Jack nuts
- 4x Potentiometer nuts
- 2x M3 metal screw
- 1x 7 segments display
- 3x Tactile switche caps

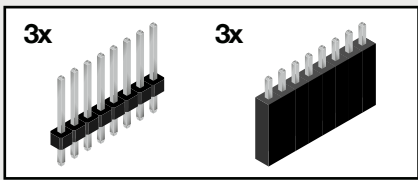
Pack 3

- 1x Top PCB
- 1x Bottom PCB
- 1x Front panel

Loose parts

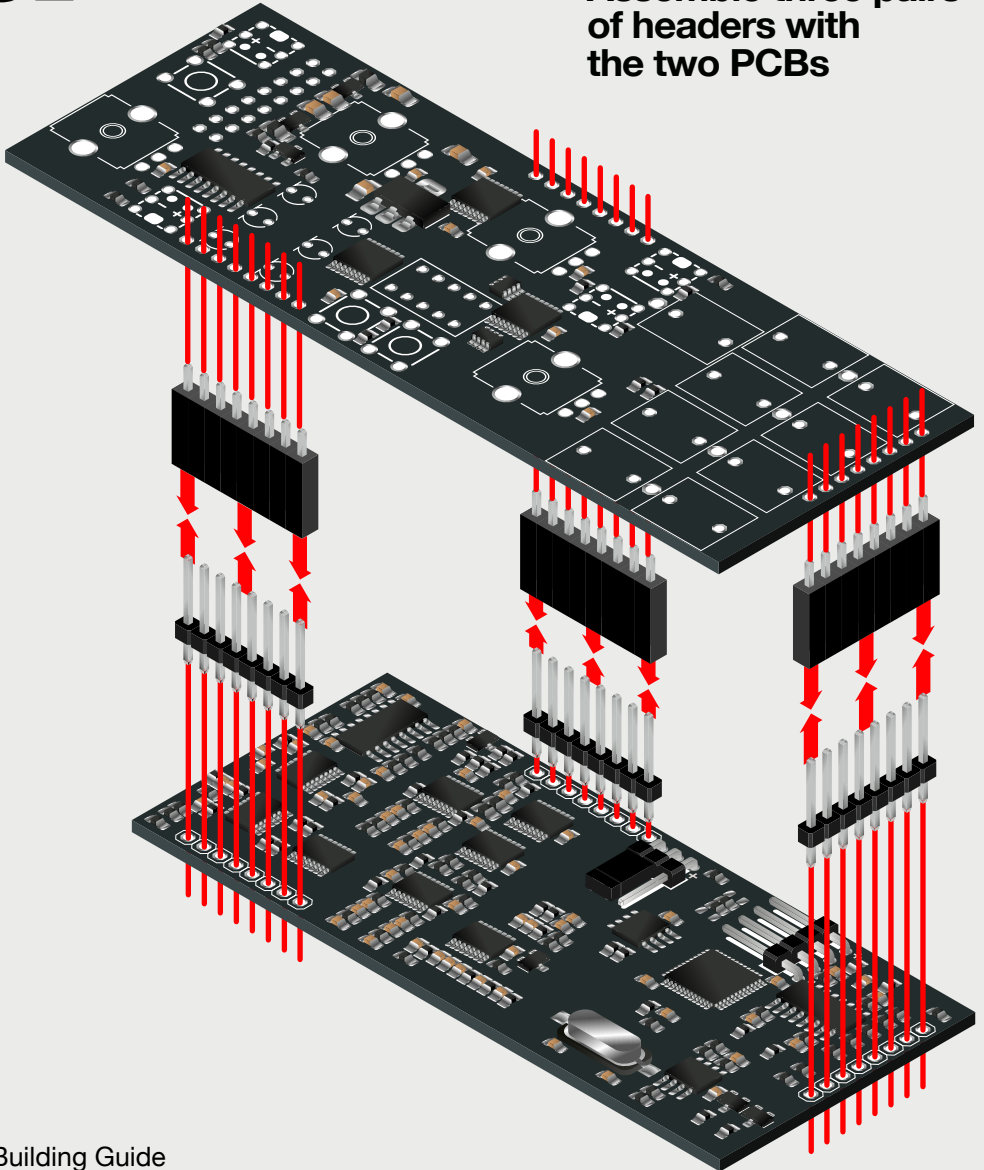
- 1x 16x16 power cable
- 4x Potentiometer caps
- 1x User manual

- Building Guide
- Shakmat Archer's Rig



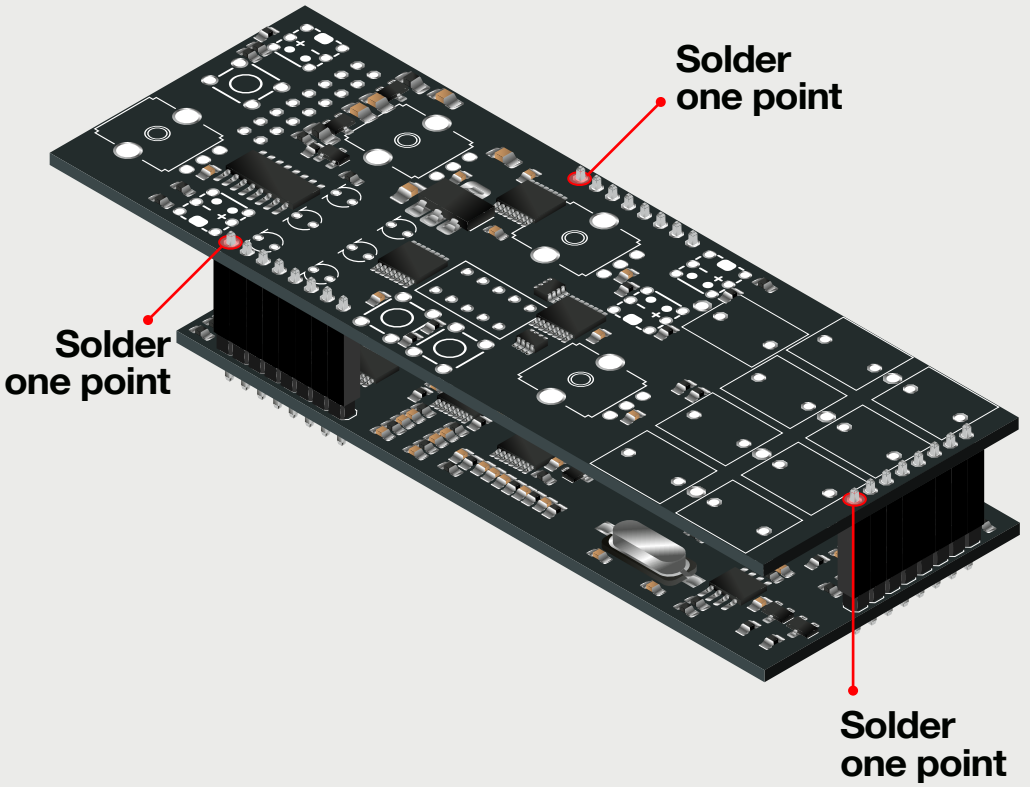
01

Assemble three pairs of headers with the two PCBs



- Building Guide
- Shakmat Archer's Rig

02

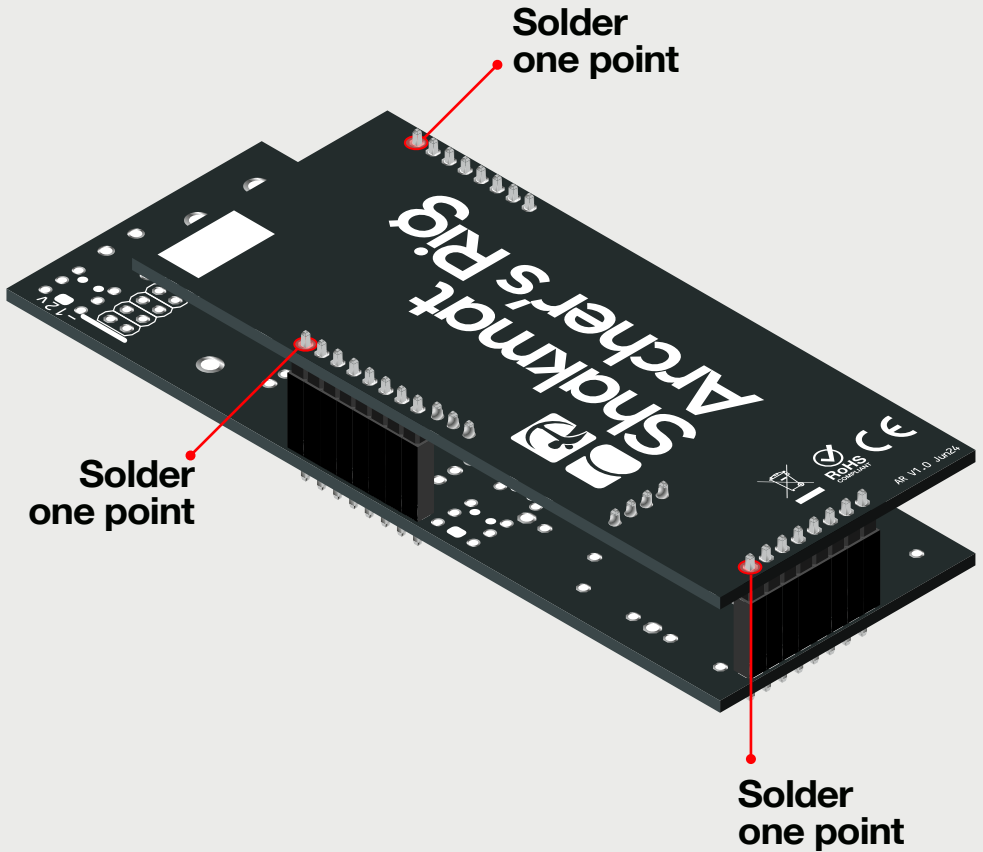


- Building Guide
- Shakmat Archer's Rig

03

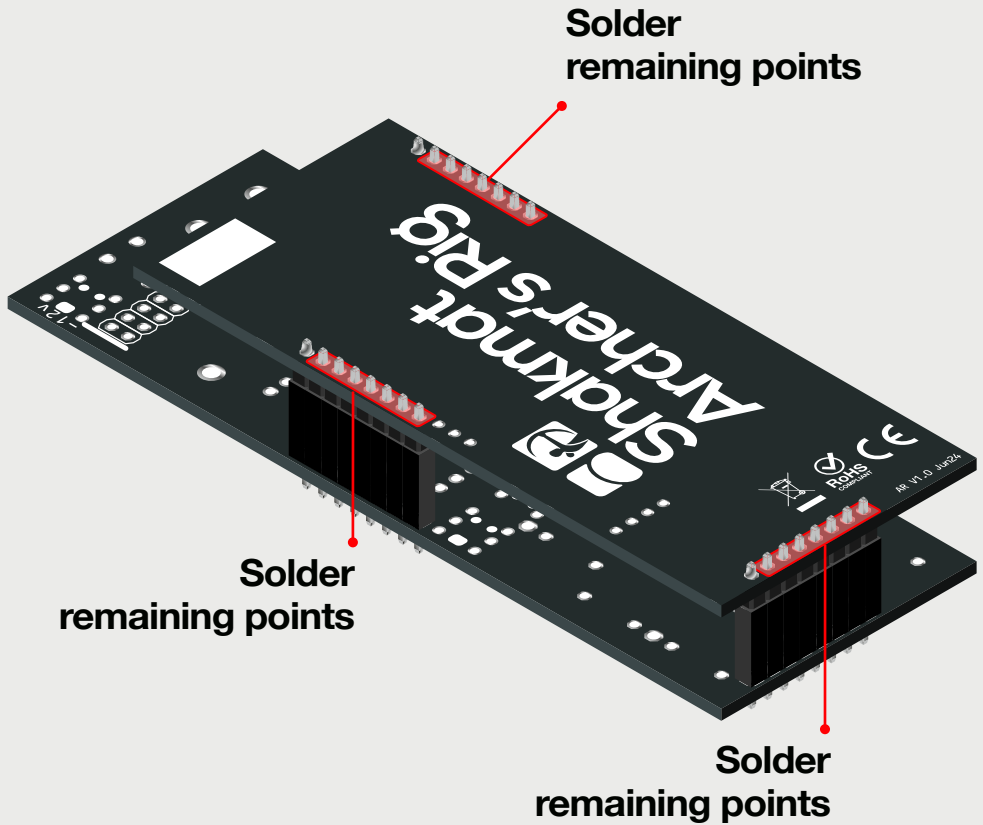
Flip the PCBs

Check PCBs parallelism!



- Building Guide
- Shakmat Archer's Rig

04

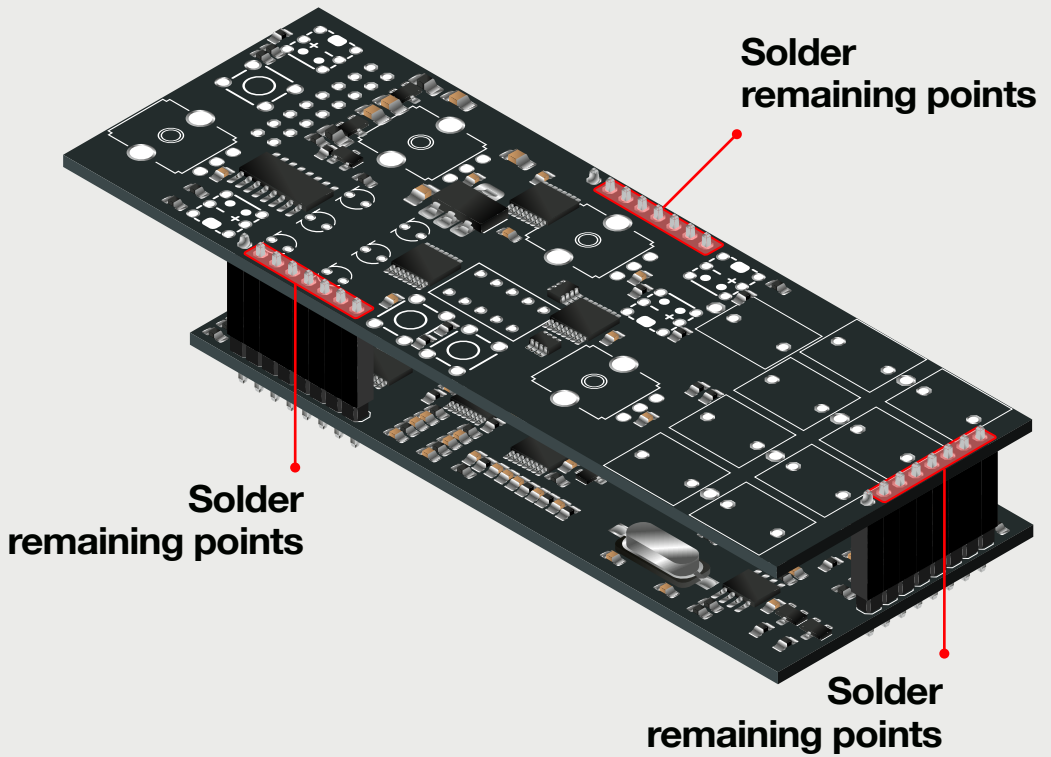


- Building Guide
- Shakmat Archer's Rig

05

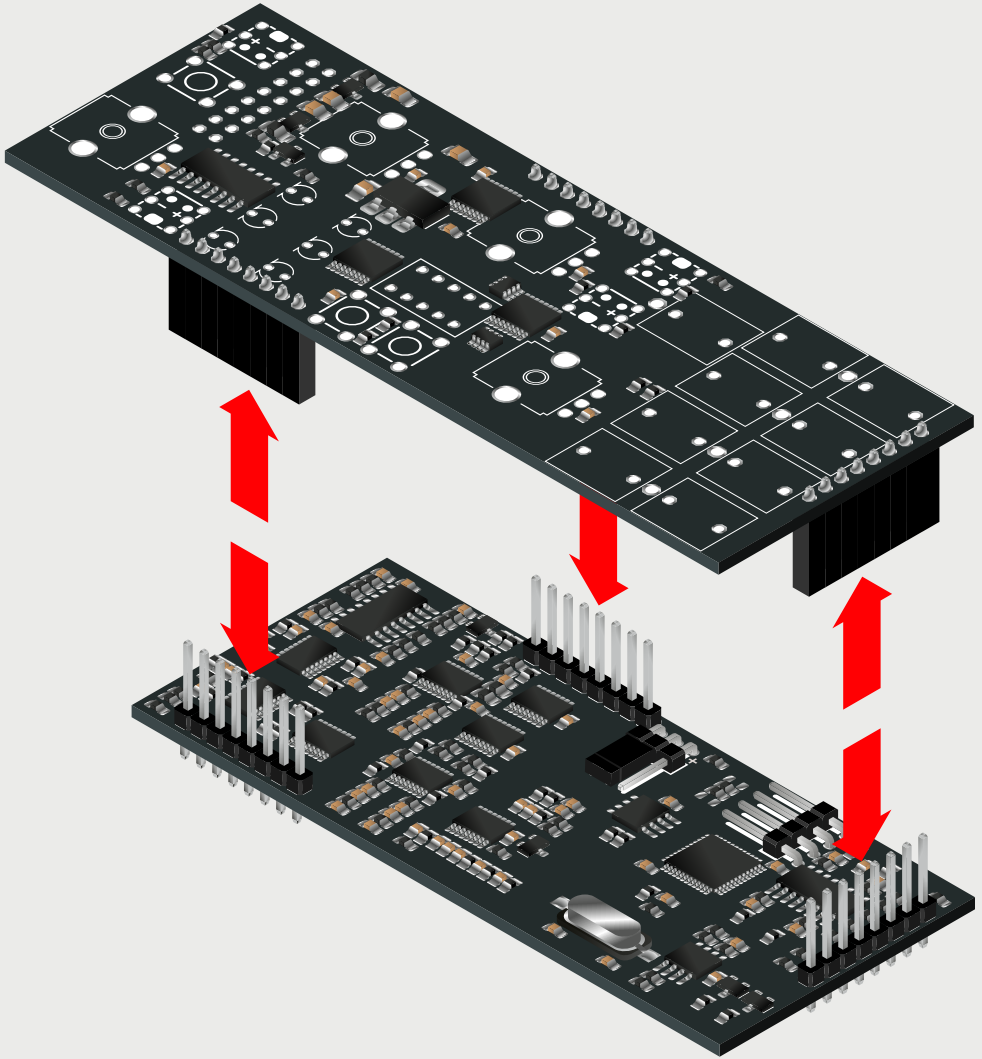
Flip the PCBs

Check PCBs parallelism!



- Building Guide
- Shakmat Archer's Rig

06 Separate the two PCBs Reserve the bottom PCB



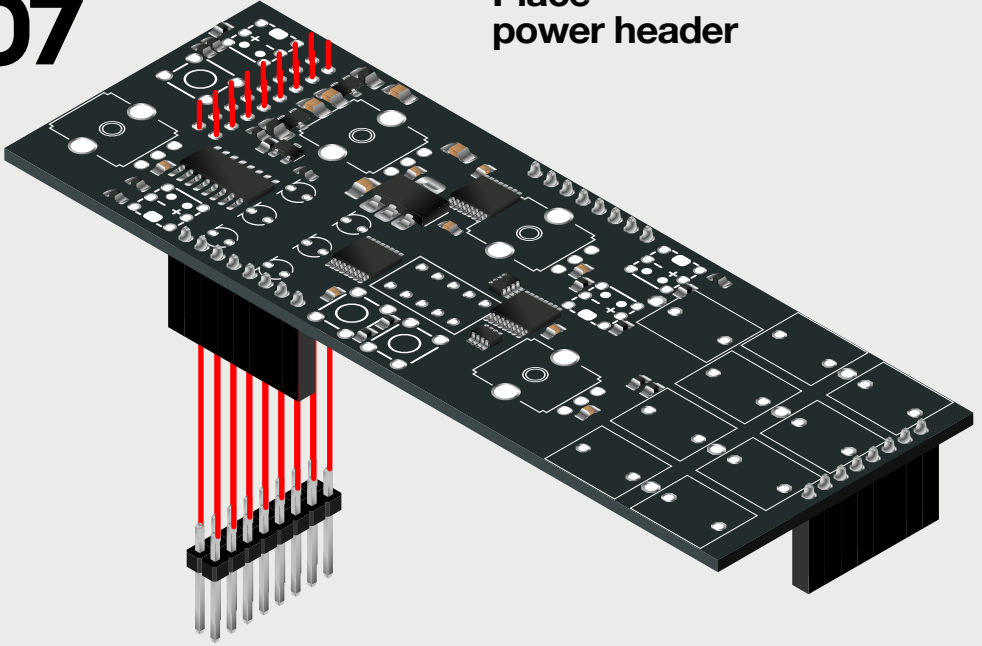
- Building Guide
- Shakmat Archer's Rig

1x

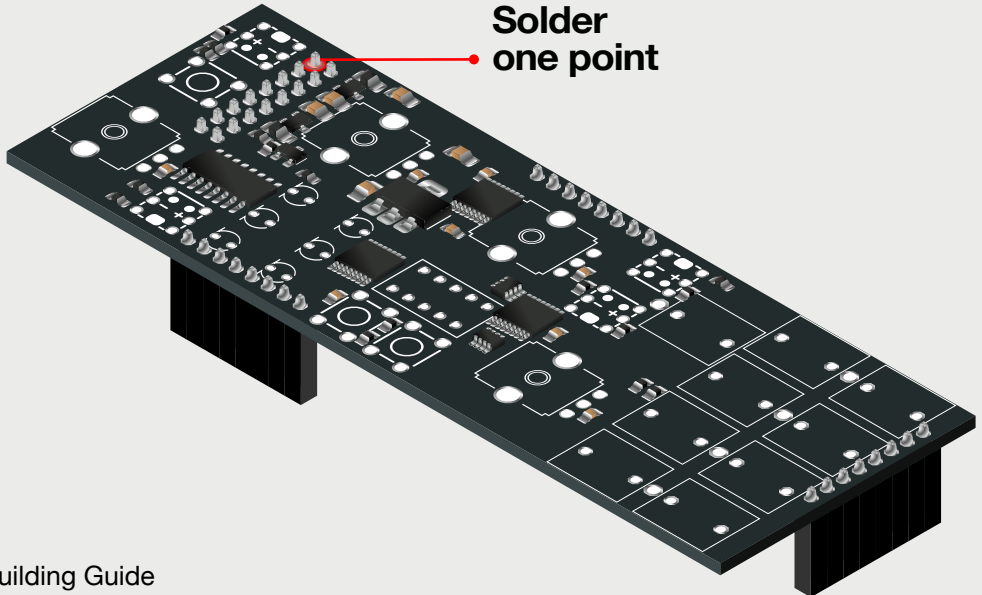


07

Place
power header



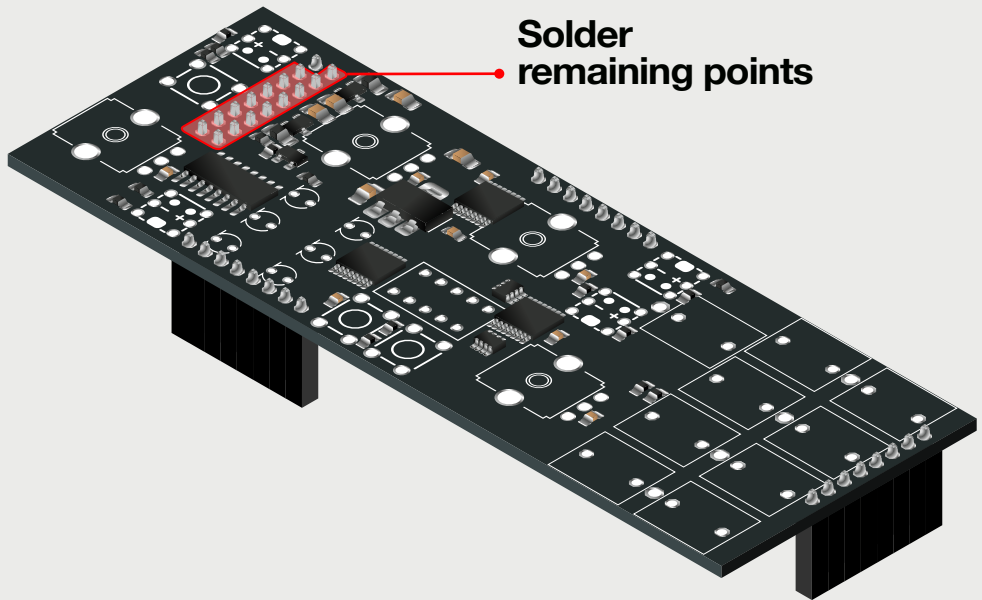
Solder
one point



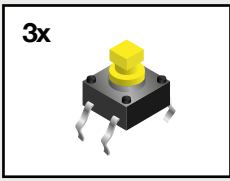
- Building Guide
- Shakmat Archer's Rig

08

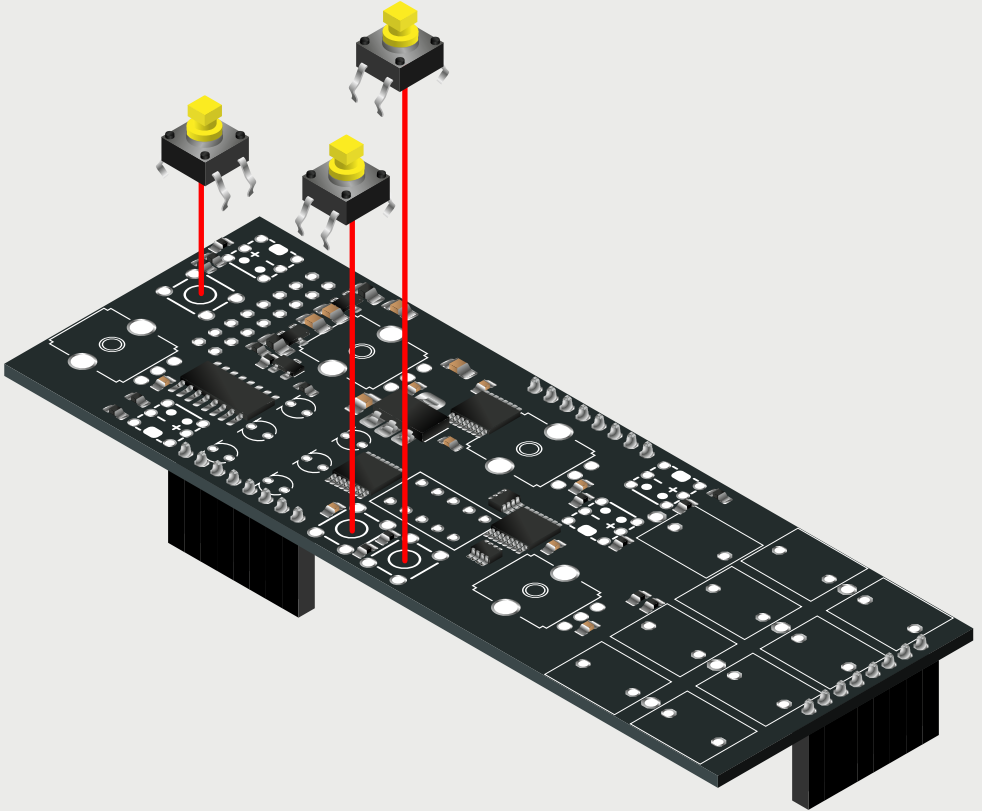
Check header & PCB perpendicularity!



- Building Guide
- Shakmat Archer's Rig

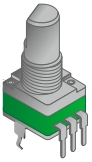


09 Place 3 switches but do not solder!



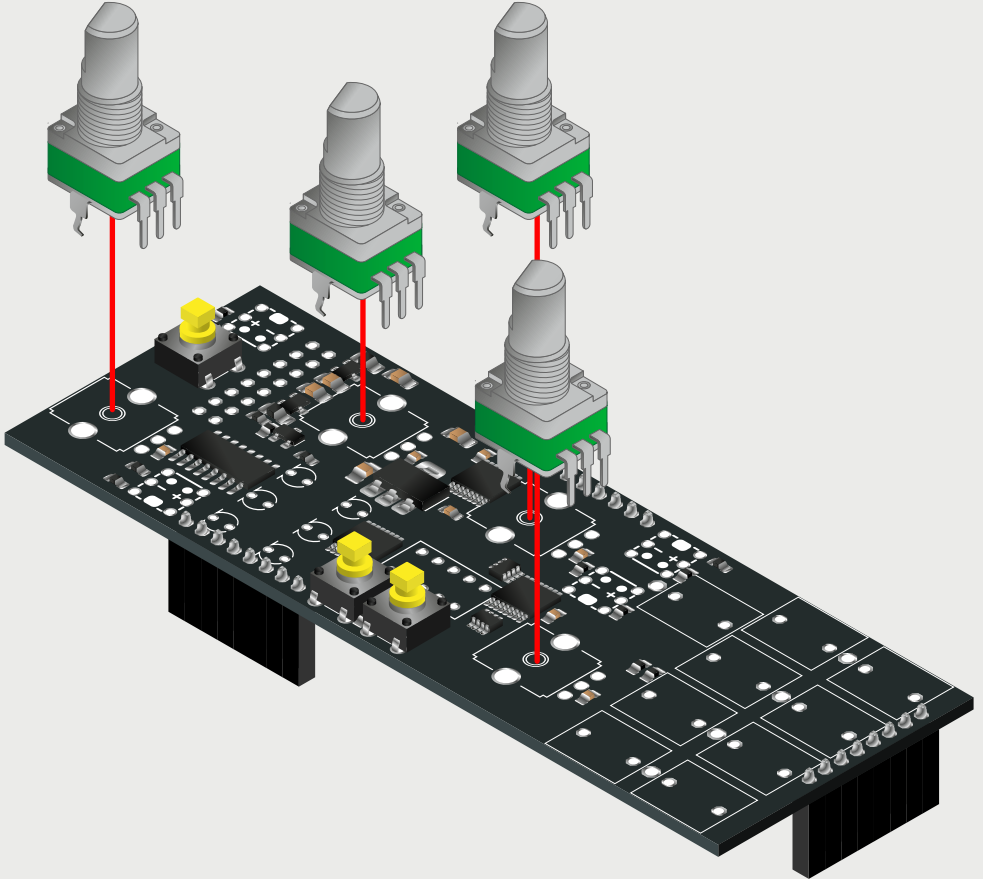
- Building Guide
- Shakmat Archer's Rig

4x

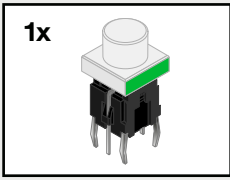


10

Place 4 potentiometers
but do not solder!



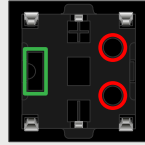
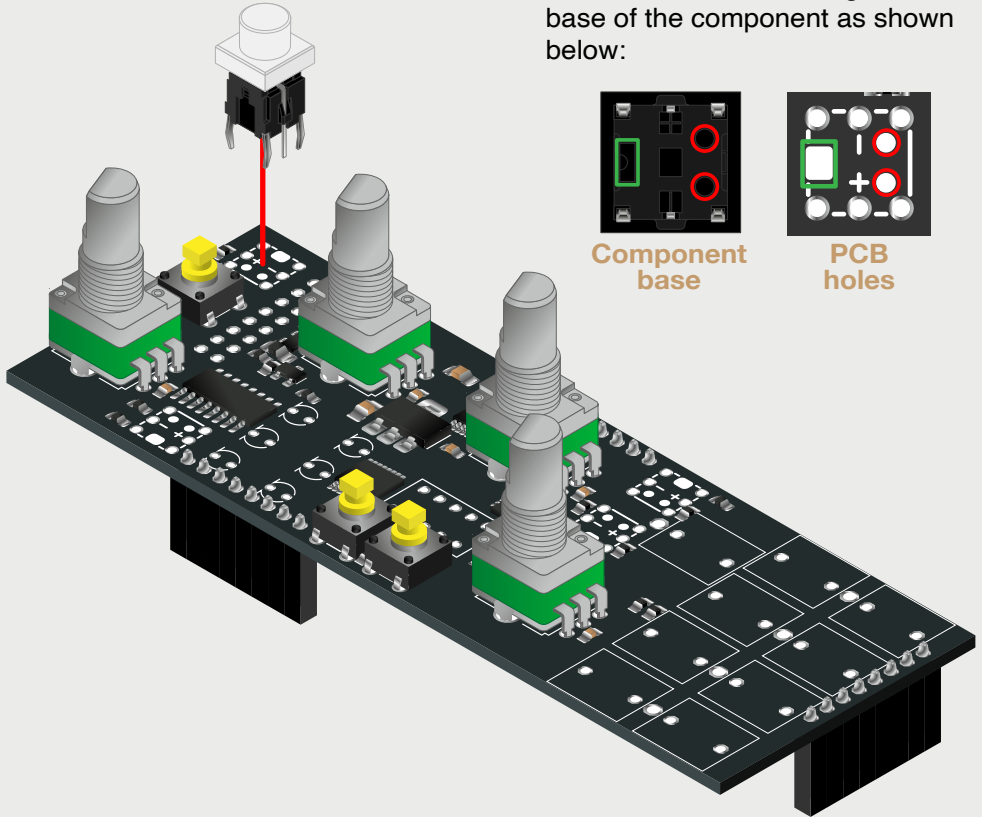
- Building Guide
- Shakmat Archer's Rig



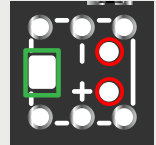
11

Place 1 green LED push button but do not solder!

As the buttons embed an LED, you must pay attention to the orientation. The three holes on the PCB have to match the three mouldings on the base of the component as shown below:



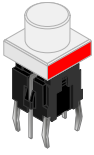
Component base



PCB holes

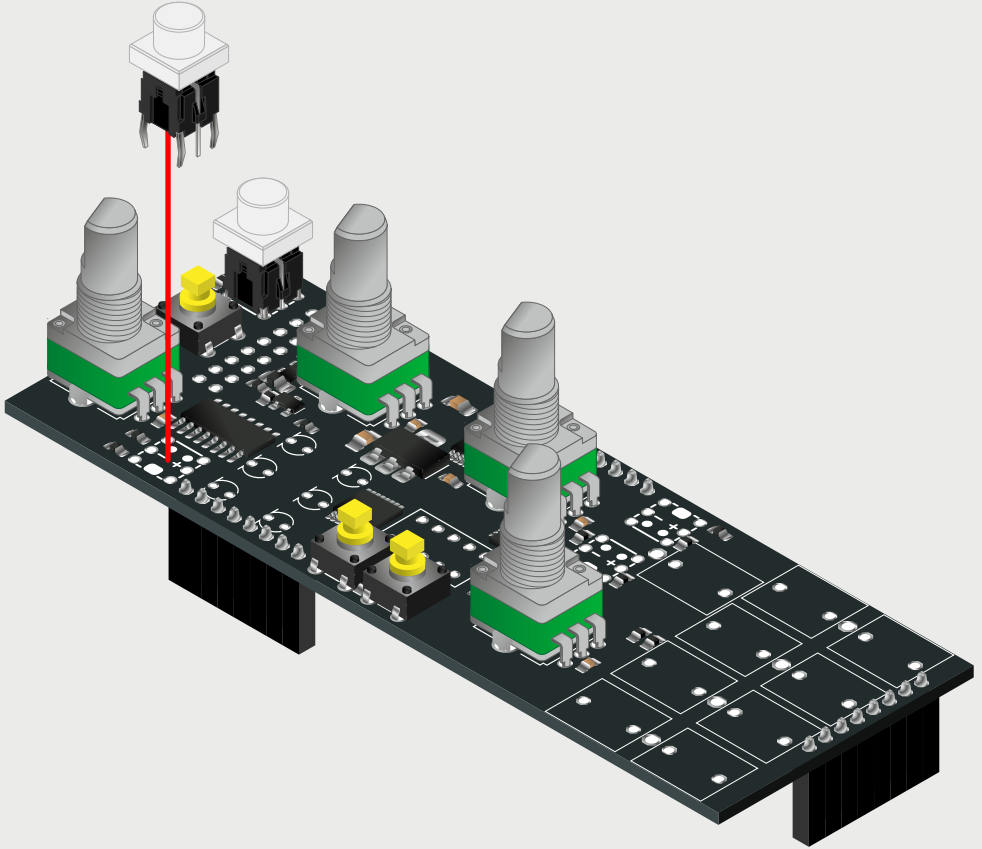
- Building Guide
- Shakmat Archer's Rig

1x

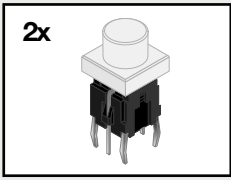


12

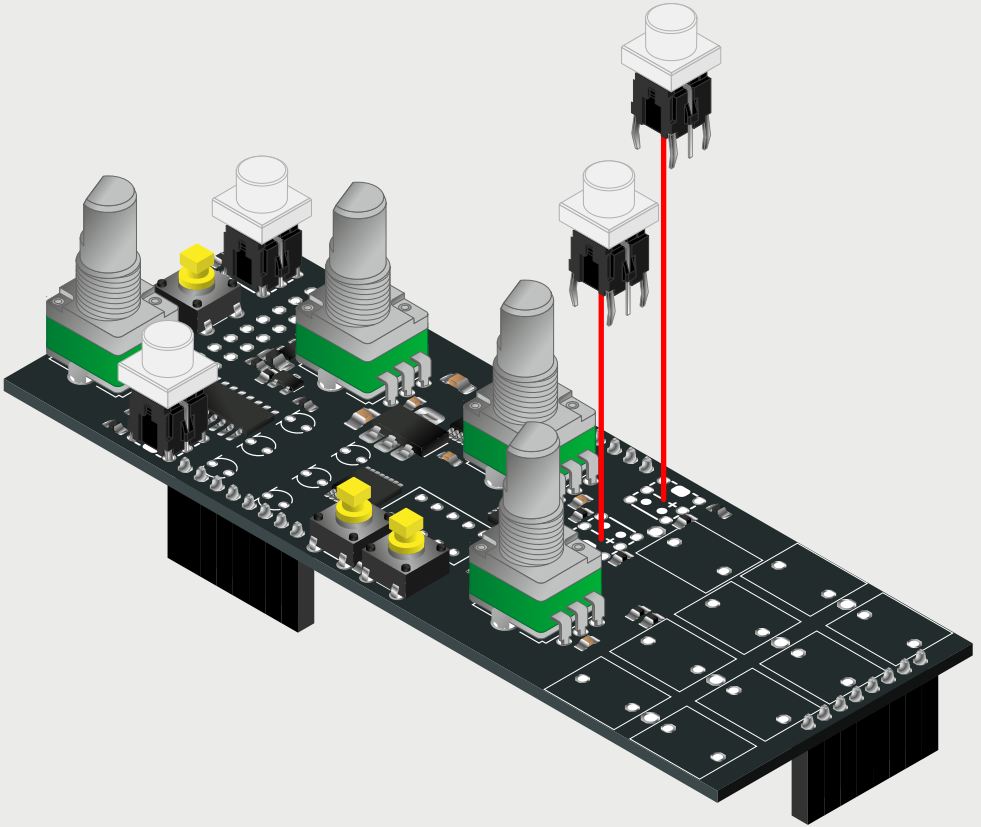
Place 1 amber LED push button but do not solder!



- Building Guide
- Shakmat Archer's Rig



13 Place 2 white LED push button but do not solder!

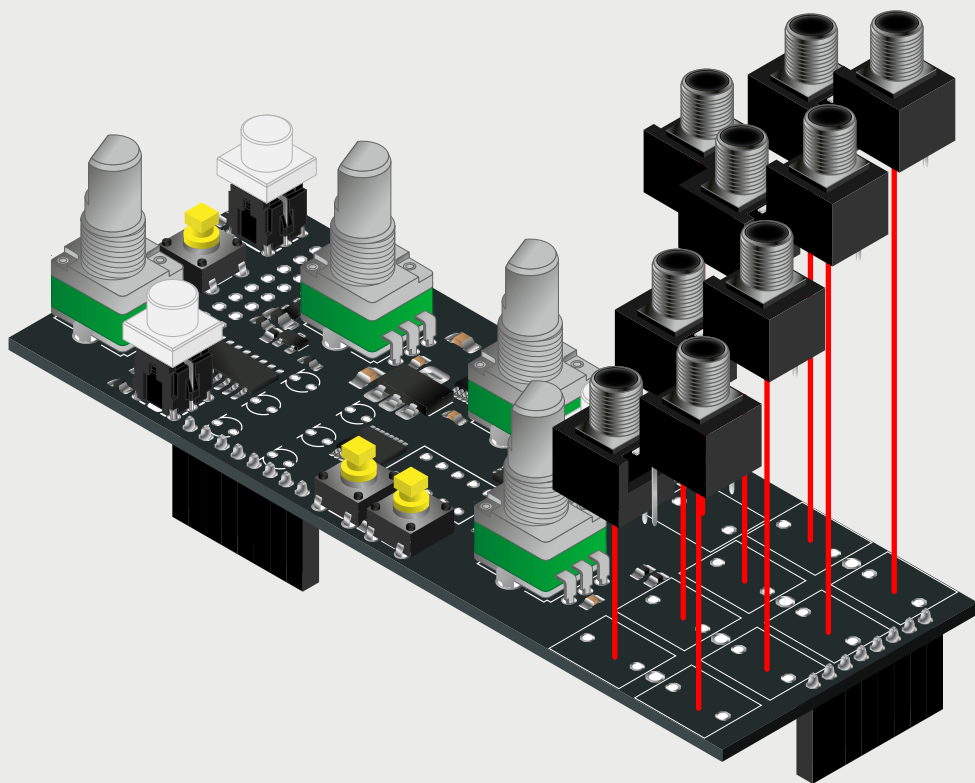


- Building Guide
- Shakmat Archer's Rig

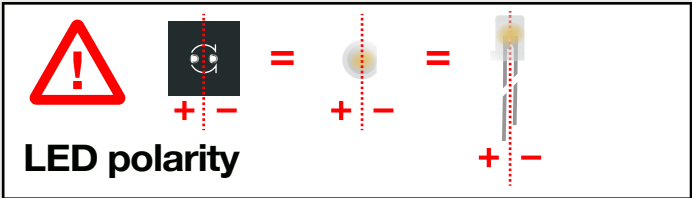
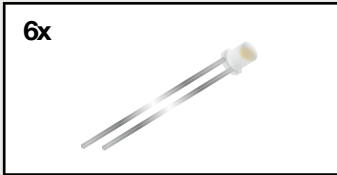


14

**Place 9 jack
but do not solder!
First & second row share holes
for one of their pin.**

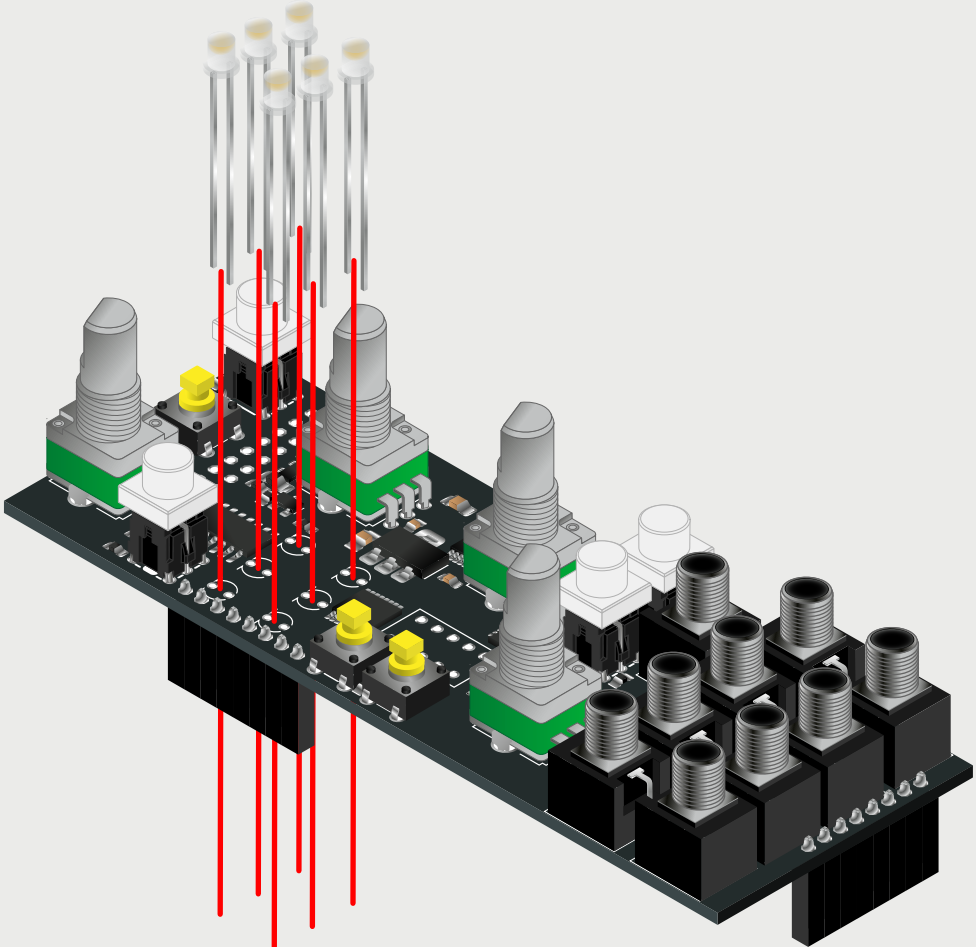


- Building Guide
- Shakmat Archer's Rig



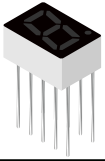
15

**Place 6 amber LED
but do not solder!**

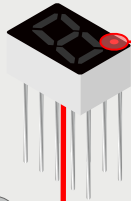


- Building Guide
- Shakmat Archer's Rig

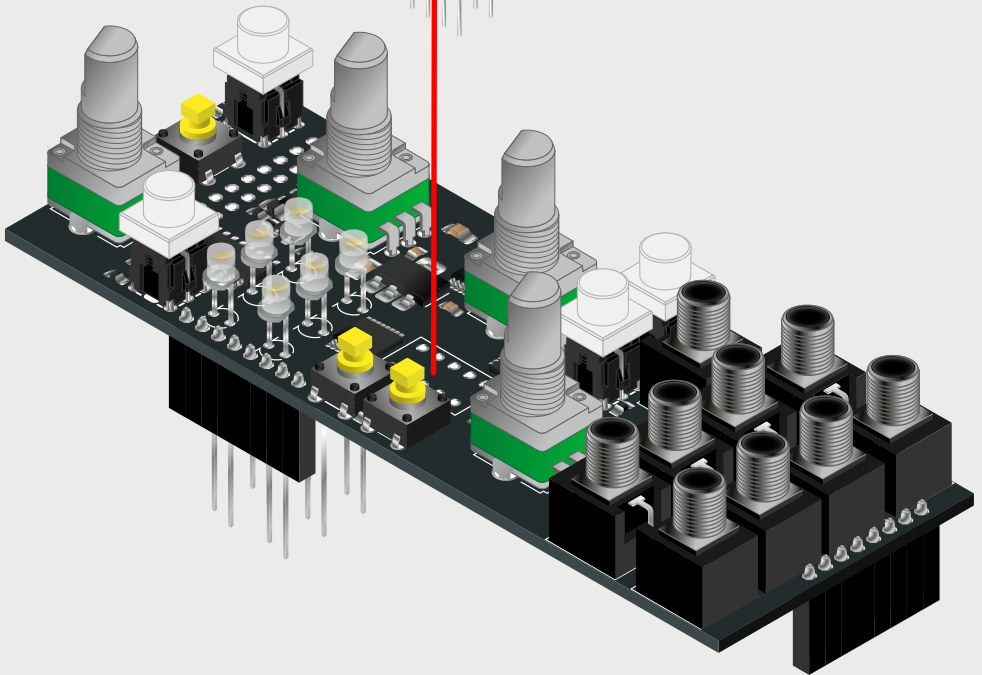
1x



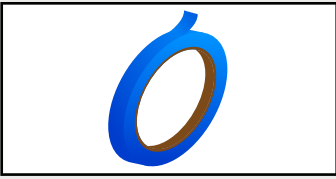
16 Place the 7 segments display but do not solder!



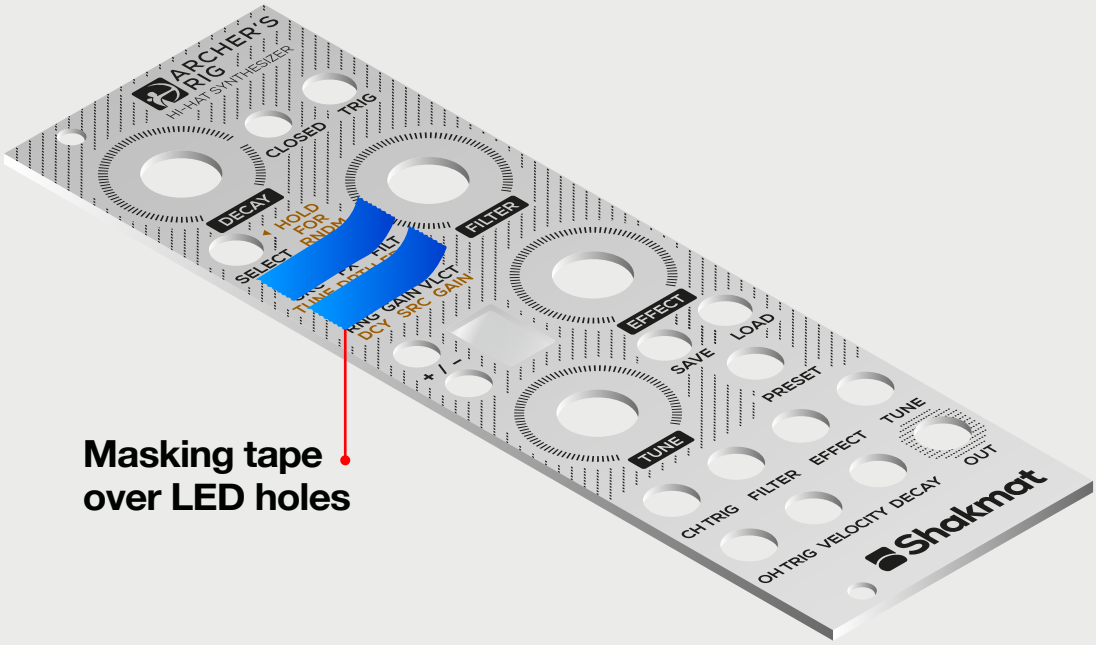
• Dot on displays should be at the bottom



- Building Guide
- Shkmat Archer's Rig



17

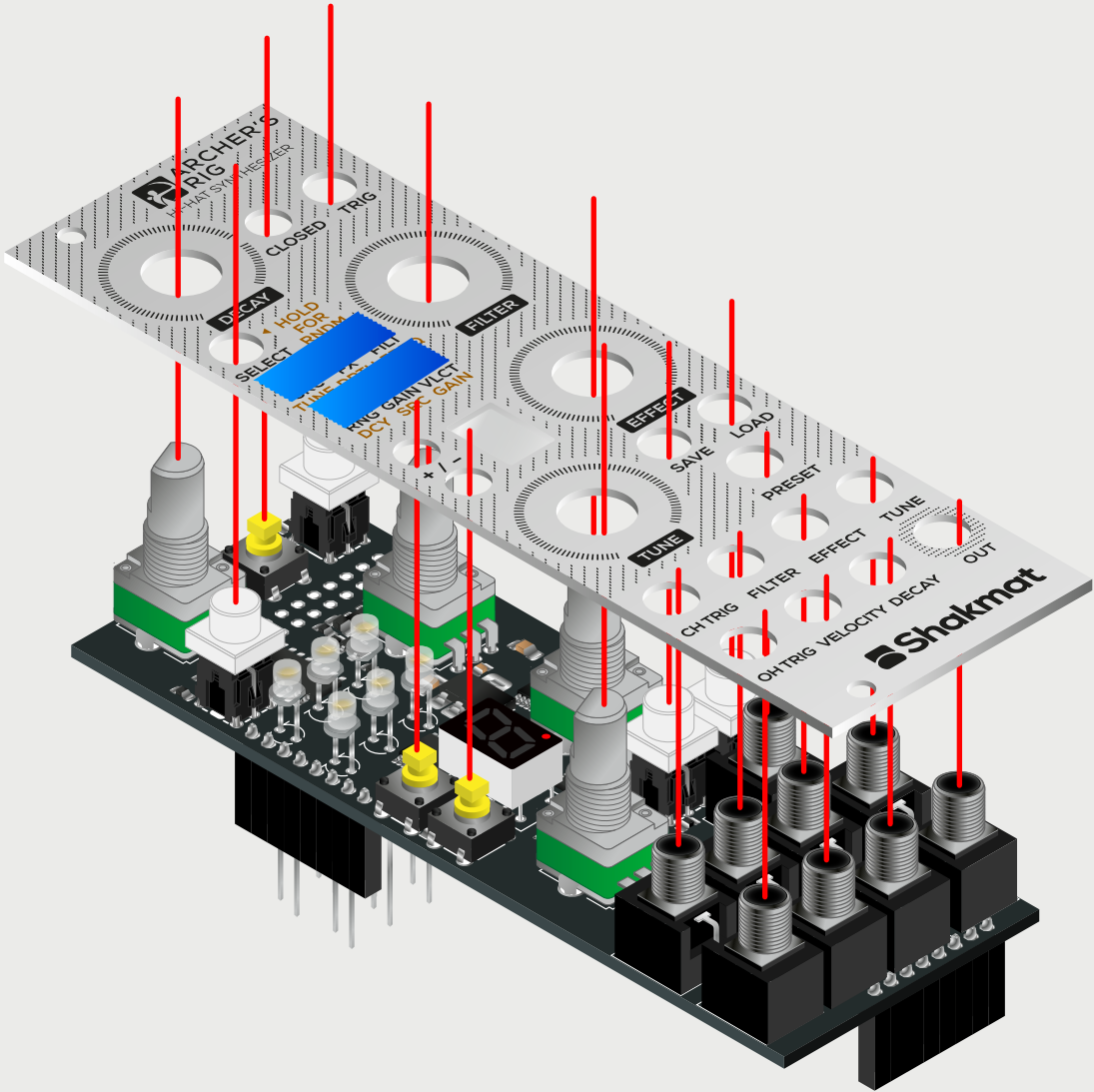


Masking tape
over LED holes

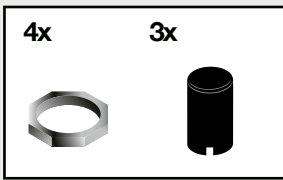
- Building Guide
- Shakmat Archer's Rig

18

Place front panel
on the populated PCB

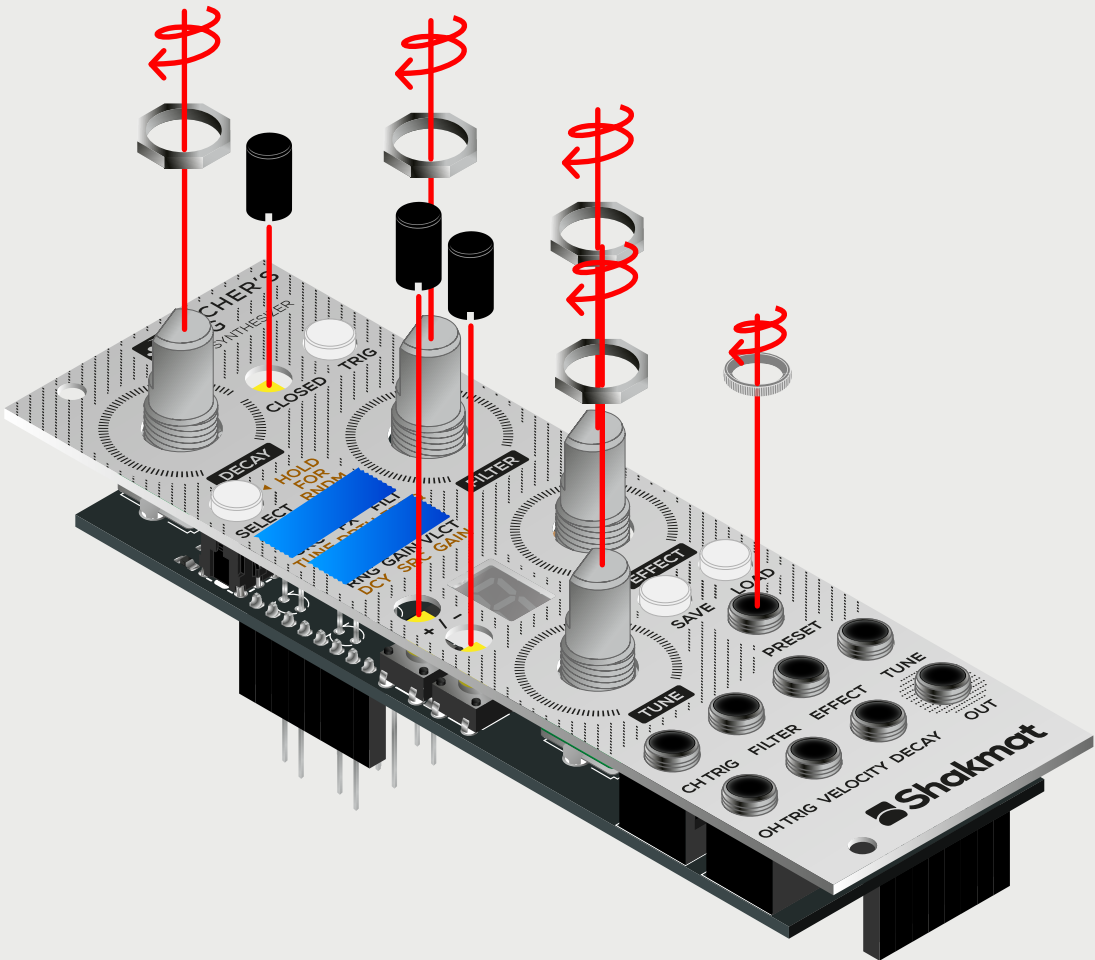


- Building Guide
- Shakmat Archer's Rig



19

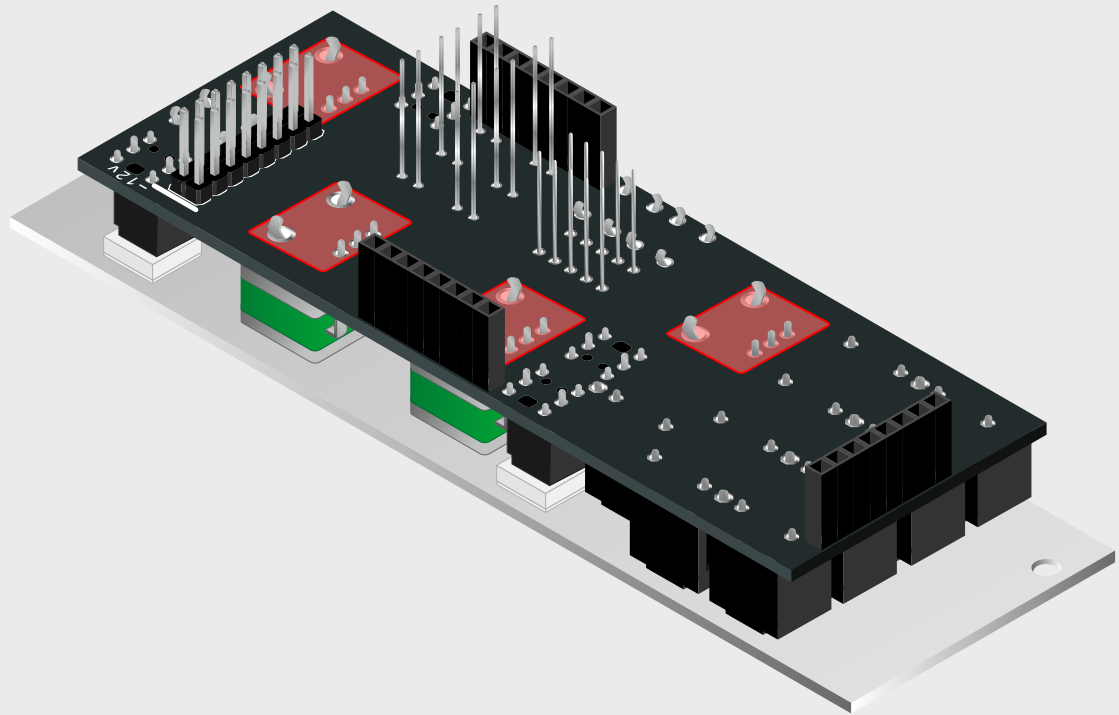
Tighten 4 hex nuts
Push down three button caps



- Building Guide
- Shakmat Archer's Rig

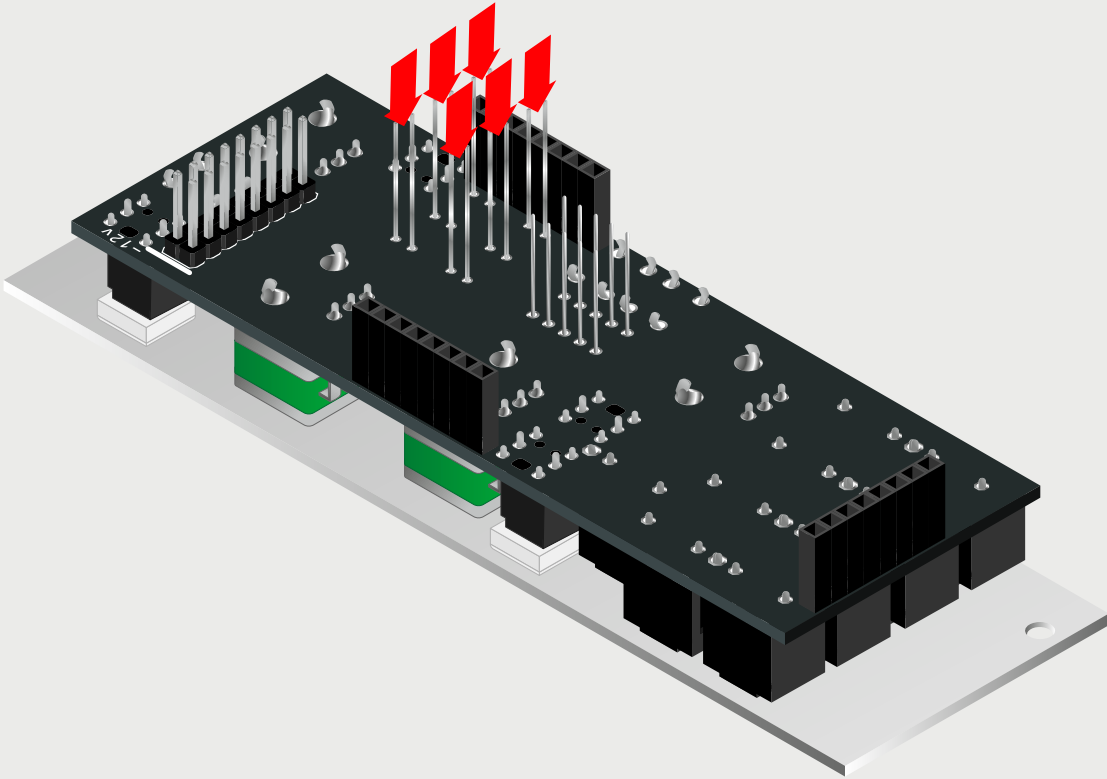
20

Check that the 4 potentiometers are still well-sited through the PCB, then solder them.



- Building Guide
- Shakmat Archer's Rig

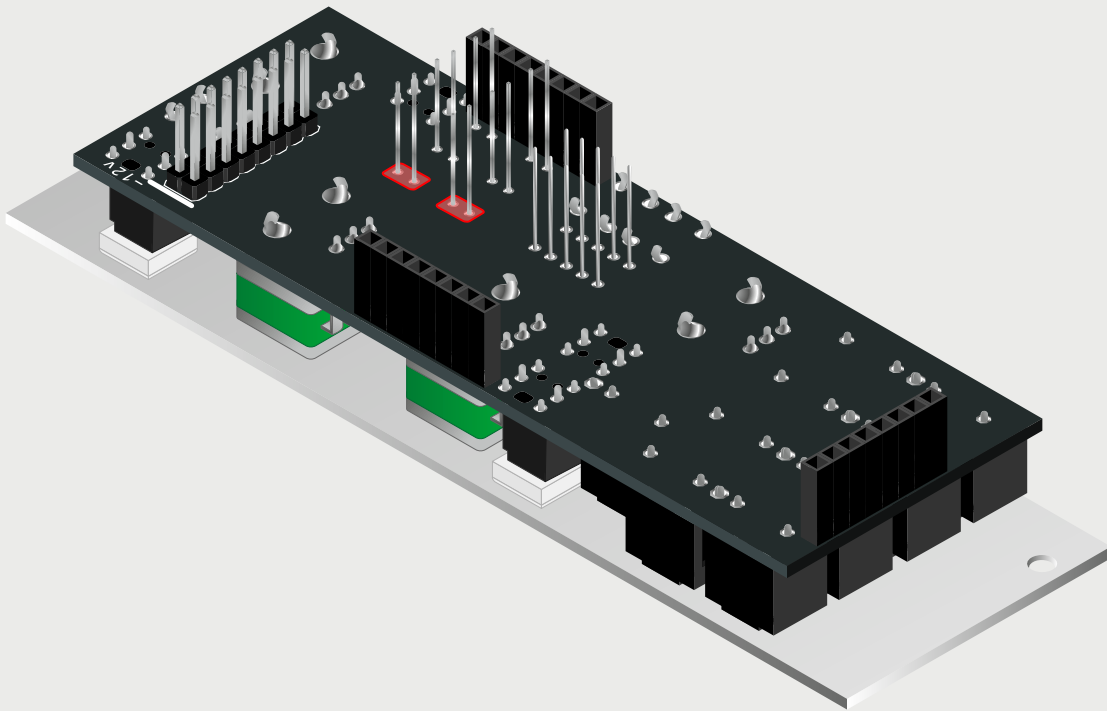
21 Push each LED through the front panel until it sticks to the masking tape.



- Building Guide
- Shakmat Archer's Rig

22

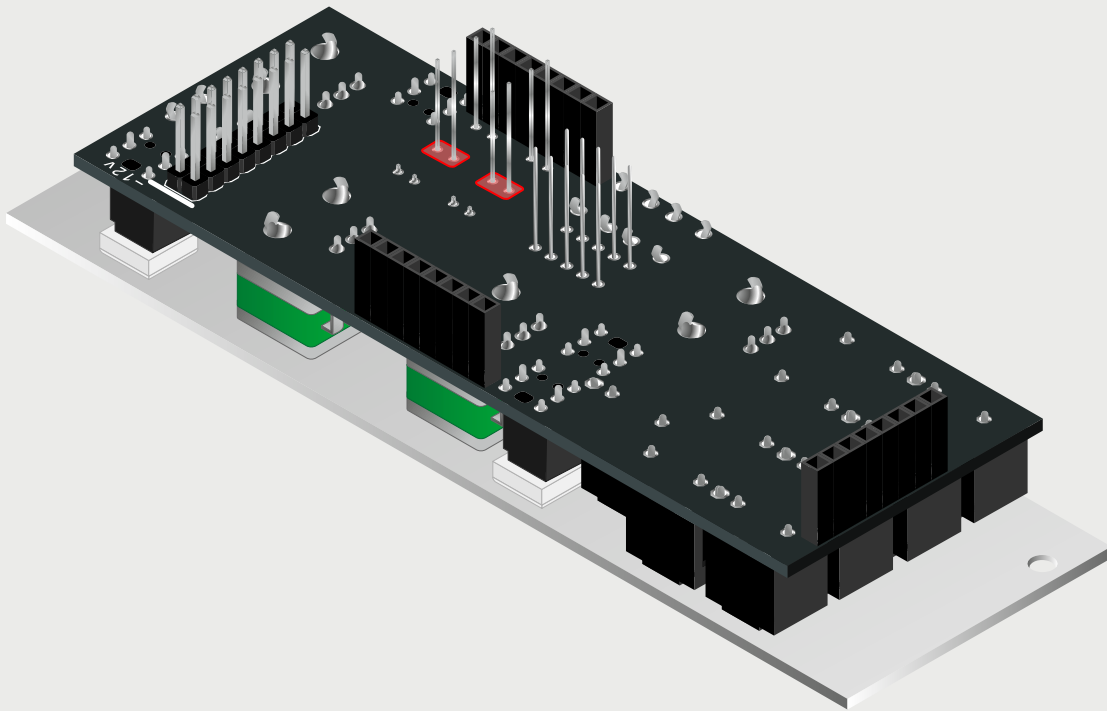
Solder the first column of LEDs and cut off the excess legs.



- Building Guide
- Shakmat Archer's Rig

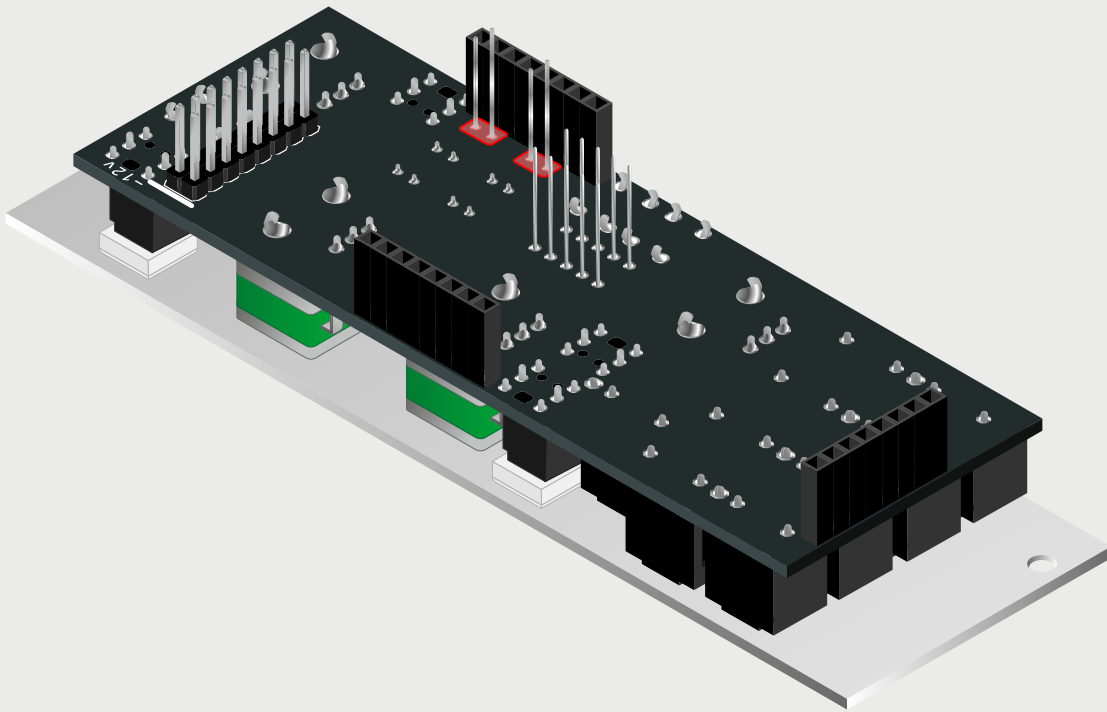
23

Solder the second column of LEDs and cut off the excess legs.



- Building Guide
- Shakmat Archer's Rig

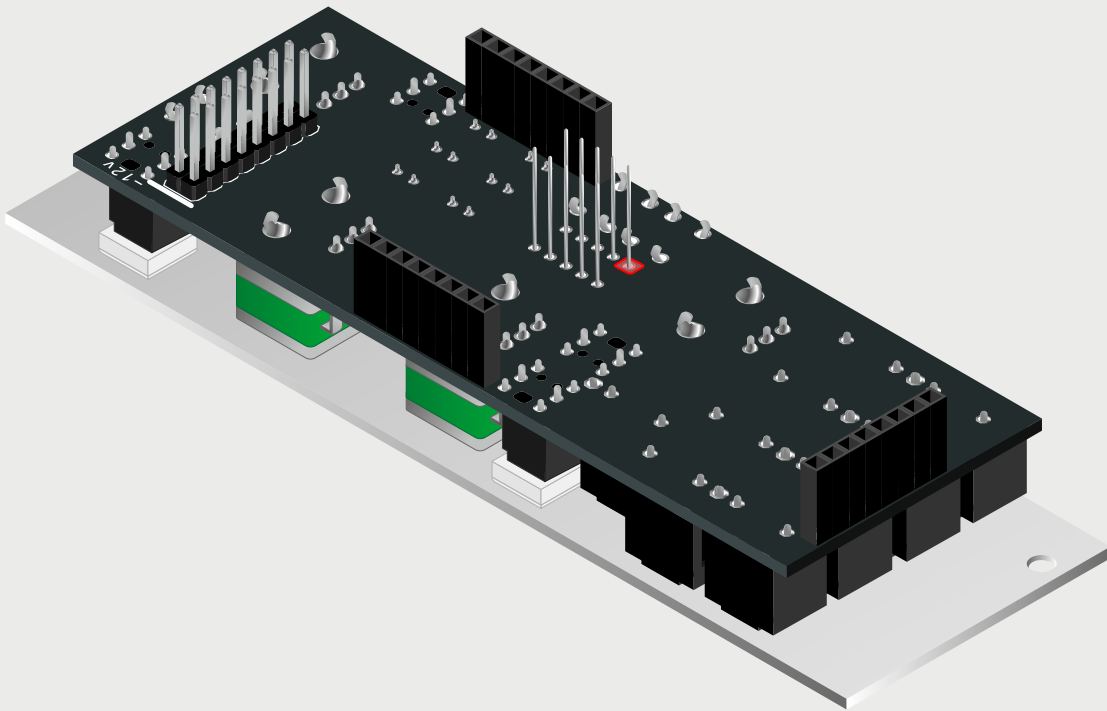
24 Solder the third column of LEDs and cut off the excess legs.



- Building Guide
- Shakmat Archer's Rig

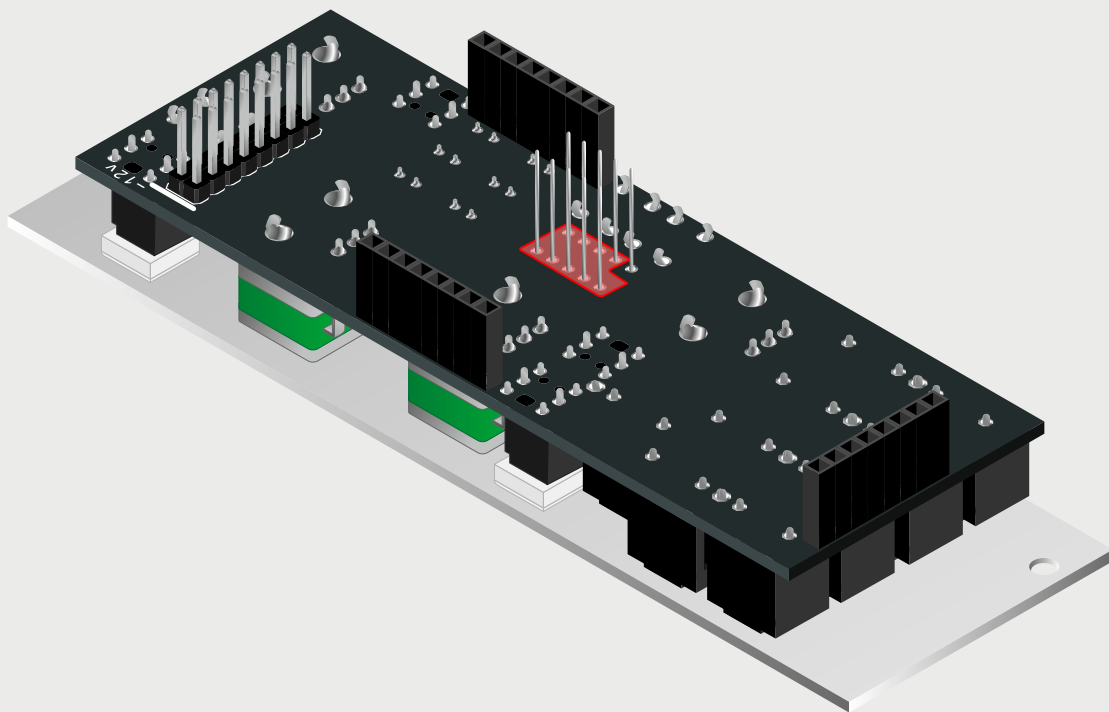
25

Check that the 7 segments display lays flat on the front panel window, then solder one leg



- Building Guide
- Shakmat Archer's Rig

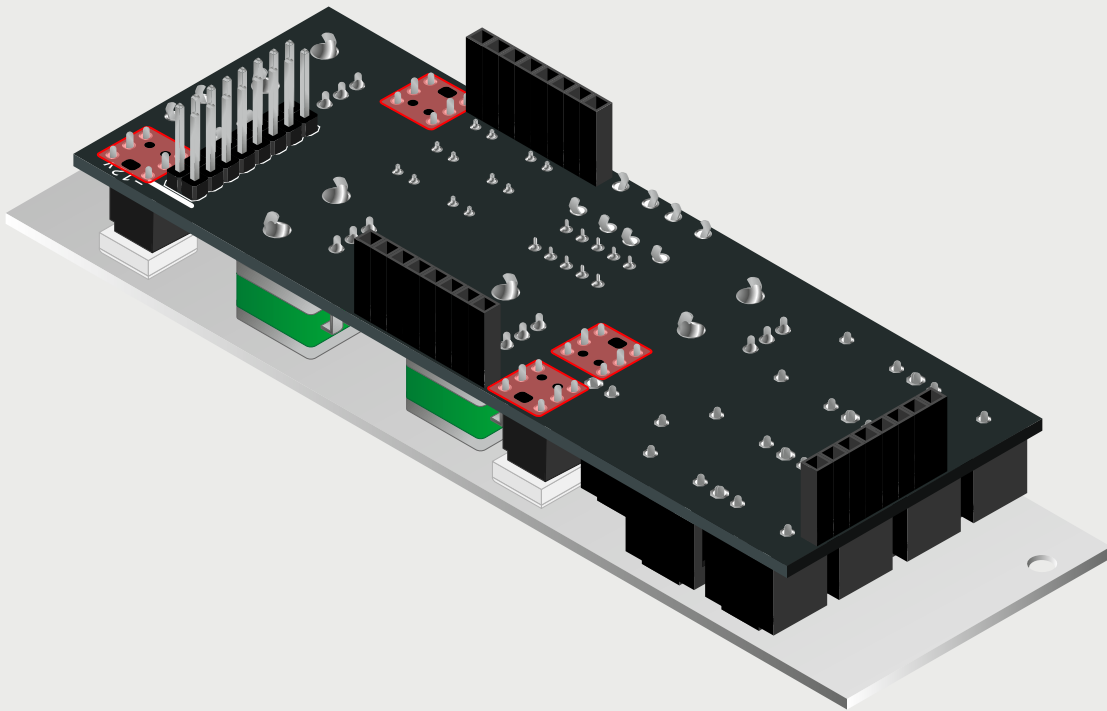
26 Check the alignment of the display through the front panel window, correct it by reheating the previously soldered point, if necessary, then solder the remaining legs and cut off the excess.



- Building Guide
- Shakmat Archer's Rig

27

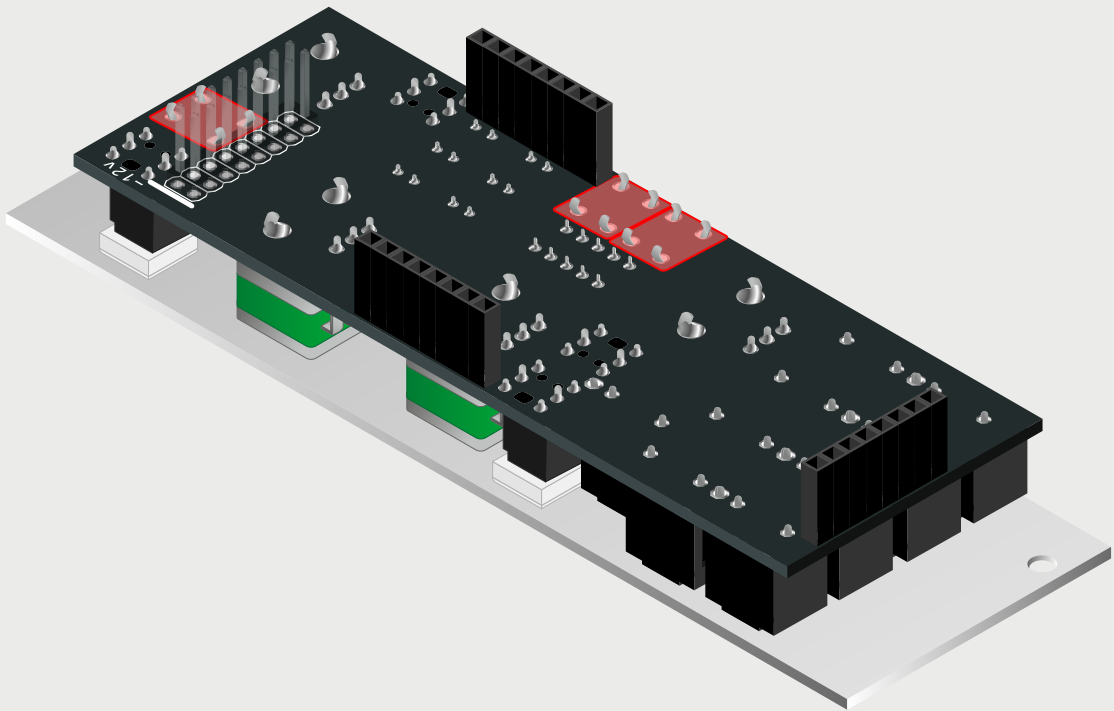
Check that the 4 LED push buttons click well, then solder them.



- Building Guide
- Shakmat Archer's Rig

28

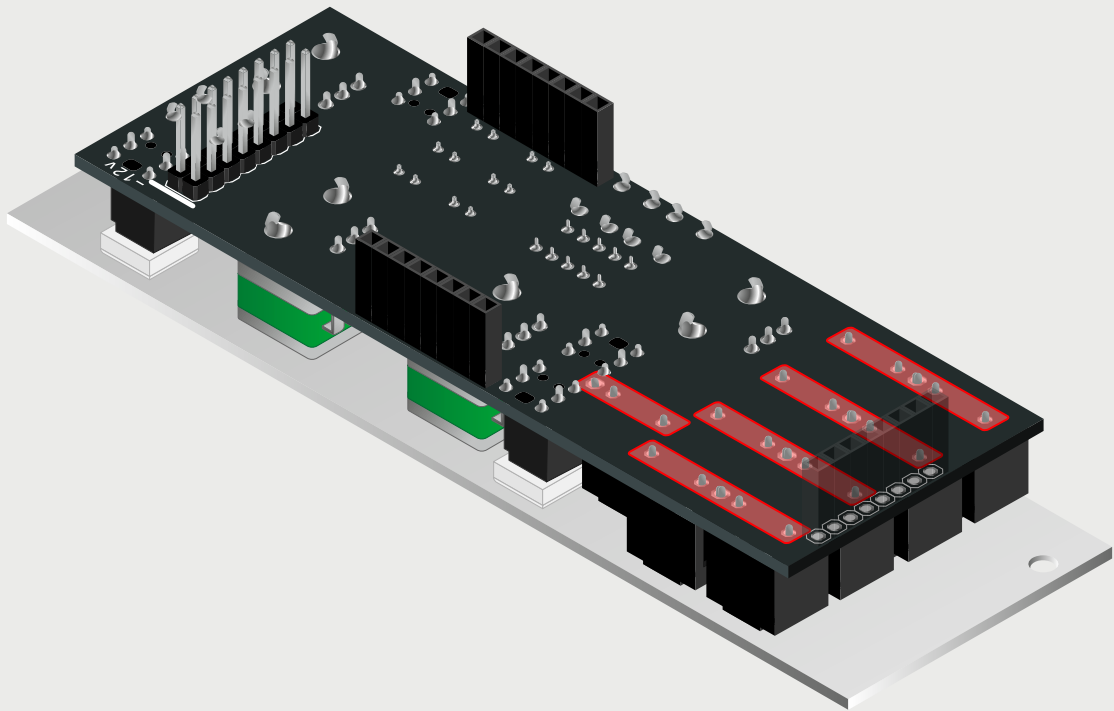
Check that the 3 push buttons click well, then solder them.



- Building Guide
- Shakmat Archer's Rig

29

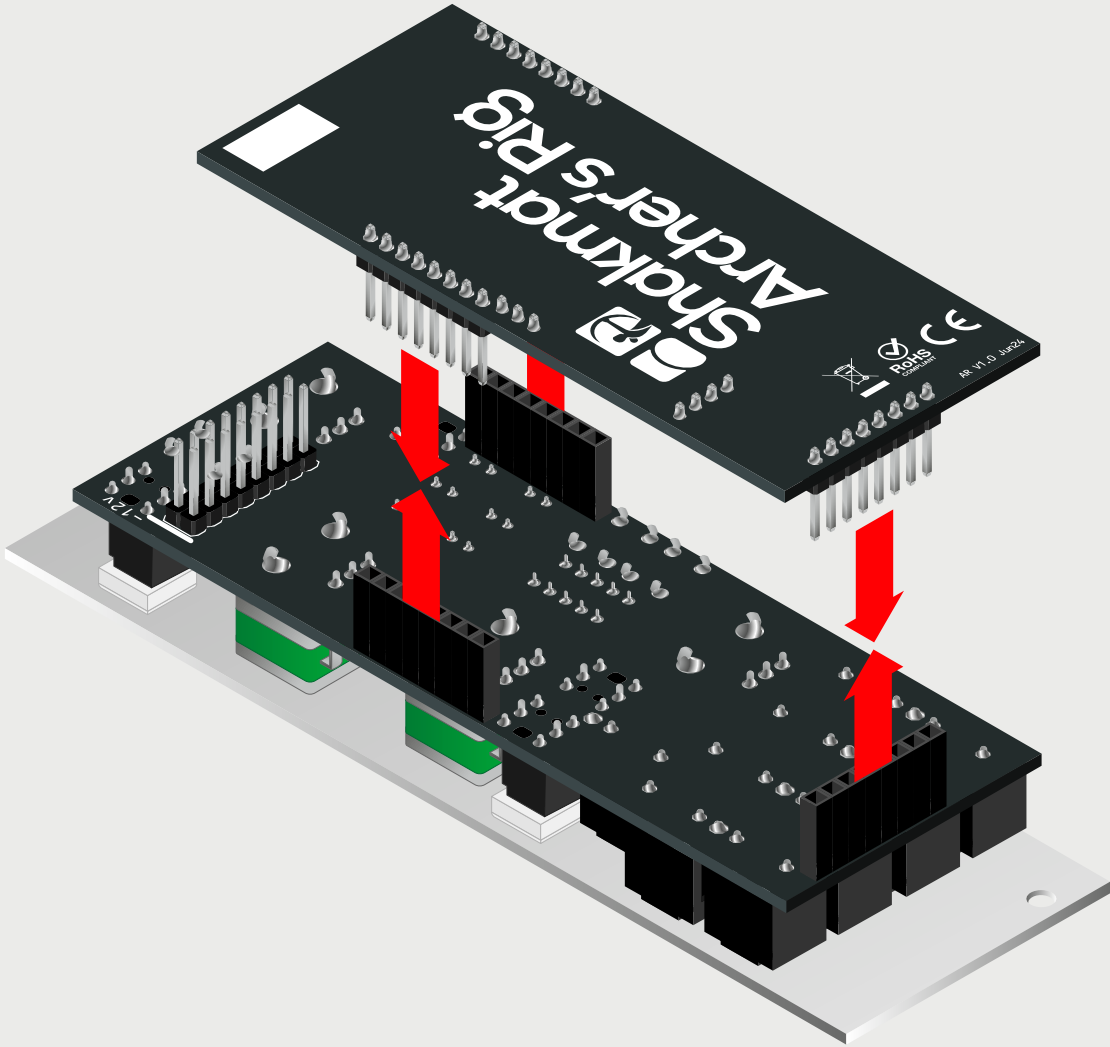
Solder 9 jack connectors.



- Building Guide
- Shakmat Archer's Rig

30

Assemble the two PCBs together



- Building Guide
- Shakmat Archer's Rig

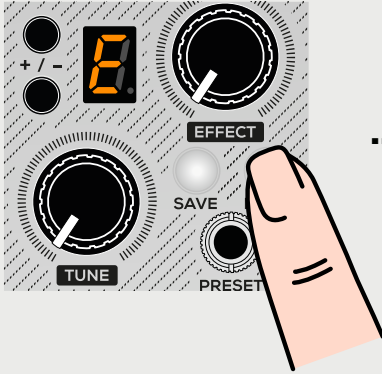
31

Power up your Archer's Rig while pressing the Closed & Trig buttons.

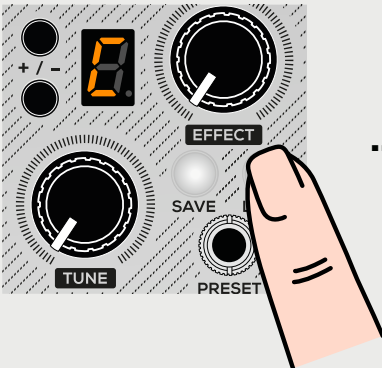


Confirm by pressing Load

Wait



Make sure no jacks are inserted, then press Load to confirm



- Building Guide
- Shakmat Archer's Rig

Congratulations, you're done!



- Building Guide
- Shakmat Archer's Rig

